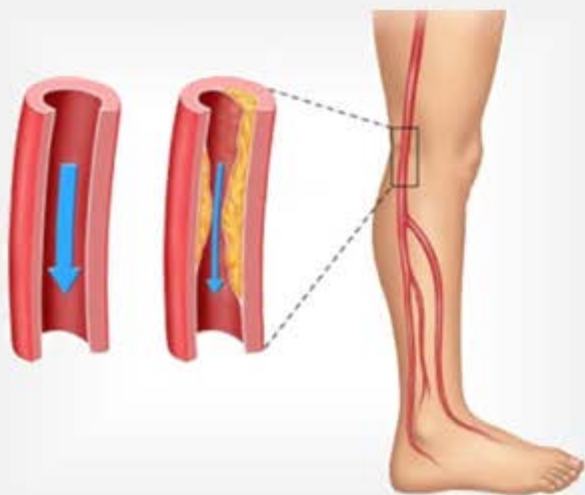


The Nationwide Burden of 30-Day Readmissions following Revascularization for PAD

More than **1 in 6 patients** with PAD are readmitted within 30 days after revascularization



Readmissions are:



Costly
\$11,013 per readmission

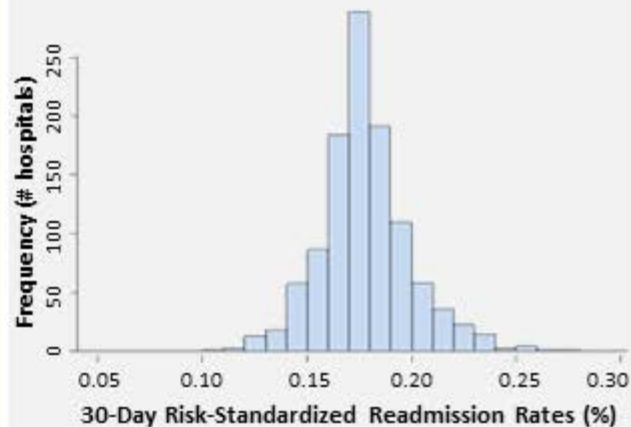


Fatal
4.6% died during readmission



Related to Complications
28% of all causes of readmission

Variations in hospital quality were modest



Hospital-Specific Risk-Standardized Readmission Rates:
IQR: 16.6% - 18.8%