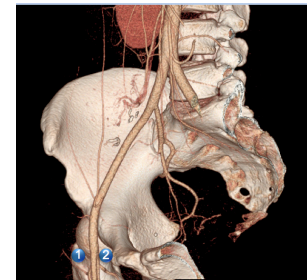
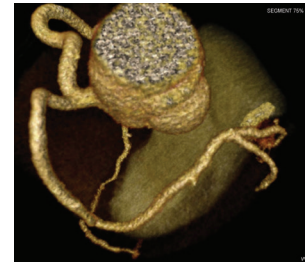


Beth Israel Deaconess
Medical Center



HARVARD MEDICAL SCHOOL
TEACHING HOSPITAL

Department of Radiology: Musculoskeletal Imaging & Intervention Fellowship Program



Abdominal Imaging • Body MRI • Breast Imaging • Cardiothoracic Imaging • Musculoskeletal Imaging • Neuroradiology

Department of Radiology
Beth Israel Deaconess Medical Center
330 Brookline Ave., TCC-4
Boston, MA 02215

Program Overview

Our department prides itself on being supportive of its fellows and places strong emphasis on the quality of teaching on a person-to-person basis. Please see our website:

<http://www.bidmc.org/MedicalEducation/Departments/Radiology/Fellowships.aspx>

Departmental

Daily didactic morning conferences are held for the residents. The fellows are welcomed to attend these conferences as their schedule permits. Department faculty, residents and fellows provide most didactic lectures, with frequent lectures from outside HMS faculty, past residents, as well as guest lecturers from around the world. Visiting professors from other major teaching centers in the United States and abroad spend varying periods of time in the Department. Some have taken sabbatical leave at the Beth Israel Deaconess Medical Center.

Medical Center

Radiology also has a close working relationship with a number of clinical services outside our department, which allows Radiology to participate in a number of management conferences, including Medical Management, Melanoma Management and Urology Management, as well as Chest, Pancreaticobiliary, and Liver conferences; Medical Grand Rounds, Surgical Grand Rounds, and others.

Boston

There are many great medical conferences sponsored not only by Harvard-affiliated programs, but also by a number of other medical centers. The monthly New England Roentgen Ray Society meeting is one of the more popular Radiology meetings that also includes a special program for residents and fellows. Seminars and lectures in radiology are also held at adjacent Harvard-affiliated hospitals which include the Brigham and Women's Hospital and Boston Children's Hospital.

Current Radiology Fellowships*:

- Abdominal Imaging
- Body MRI
- Breast Imaging
- Cardiothoracic Imaging
- Musculoskeletal
- Neuroradiology

*Interventional Radiology:

Due to the creation of the integrated and independent IR residency programs, the vascular and interventional radiology fellowship program is no longer accepting applications for matriculation.

For more information:

<https://www.bidmc.org/medical-education/medical-education-by-department/radiology/residencies-in-radiology/interventional-radiology-integrated-pathway-residency>



Musculoskeletal Imaging & Intervention

Match Programs	Timeline	Important Dates
*Interview Embargo Dates	Interviews may begin	December 1
NRMP Dates	Interviews completed	March 31
	Match Day	June 13 (as determined by the NRMP)

***Exception:** Internal candidates, international candidates, military candidates, and spouses are excluded from the embargo date timeline

Please note that MSK accepts both the standard application as well as the SSR application (see pg. 14)

Overview

The Department of Radiology at the Beth Israel Deaconess Medical Center, Boston, Massachusetts, offers a fellowship training program in Musculoskeletal (MSK) Imaging. The program provides advanced subspecialty training and skills to enable fellows to function as expert diagnostic consultants and practitioners in the field of MSK imaging. Graduates of our program have gone on to successful careers in both academic and private practices around the country. We have an active imaging service with high referrals related to sports medicine, rheumatology, podiatry, and orthopedic oncology. We are a tertiary referral center in New England for bone and soft tissue tumors. The MSK fellows are fully integrated into our program and run the musculoskeletal imaging service with close staff supervision. Fellows are actively involved in all procedures with graded responsibility in image-guided interventional procedures, including arthrograms, therapeutic injections, ultrasound guided bursal and tendon sheath injections, and musculoskeletal biopsies. Fellows perform and interpret MSK ultrasound studies and procedures.

The Musculoskeletal Imaging Section is staffed by 3 full time and 3 part-time attending radiologists who specialize in musculoskeletal imaging and intervention. Together we create a collegial atmosphere supportive of fellows' educational and professional development.



PROGRAM GOALS

1. To provide an organized, comprehensive and highly supervised educational experience in musculoskeletal radiology so that fellows upon completion of the program will function as independent MSK consultants and practitioners in private practice or academic settings.
2. To train fellows in the selection, performance and interpretation of diagnostic imaging studies of the musculoskeletal system, such as computed tomography (CT), magnetic resonance imaging (MRI), ultrasound (US), nuclear medicine and plain film radiography.
3. To train the fellows in the selection, performance and interpretation of invasive diagnostic and interventional procedures such as arthrography, joint injections and aspirations, CT and US guided biopsies of the MSK system, and US guided therapeutic interventions.
4. To train our fellows to be effective collaborators and medical consultants with sufficient experience to advise referring clinicians on the most expeditious and efficient imaging techniques to answer musculoskeletal imaging problems.

Curriculum

We have created a 1-year MSK fellowship-level curriculum that builds on material learned and skills acquired in the 4 year radiology residency. The curriculum provides explicit goals and learning objectives for the fellows with a road map for the year's learning, and draws from case material encountered in daily read-outs.

We have created a shared directory of helpful journal articles that can be easily accessed by the fellows on all subjects within MSK radiology, to help with case work and readouts as questions arise. Our didactic lectures have been placed into the shared directory. We are vested in our fellows' learning and success not only in our program but as our future colleagues wherever you decide to practice.

Conferences

We have developed a weekly didactic lecture and case conference program tailored for the fellowship-level trainee, encompassing topics such as MRI protocol optimization, bone and soft tissue tumors, post-operative shoulder imaging, hip imaging, nerve entrapment, MSK ultrasound, MR evaluation of bone marrow, to name a few.

Fellows are responsible for running several weekly and monthly clinical conferences, including orthopedic oncology, sports medicine, foot and ankle, QA and follow-up, and rheumatology. We have a joint monthly journal club with the radiologists at the New England Baptist Hospital directed at fellow-level learning.

Fellows enjoy teaching medical students and radiology residents who rotate on service with us. In addition, they prepare case conferences and board reviews for the radiology residents and end-of-year lecture.

Research

The MSK section is involved in many aspects of research, from MR pulse sequence development to collaboration with our MR researchers, orthopedic surgeons, rheumatologists and internal medicine colleagues, as well as medical education. We have special research interests relating to MSK interventional procedures, musculoskeletal tumors, muscle imaging, bone densitometry, and sports medicine. Beth Israel Deaconess Medical Center is internationally recognized for its MRI research.

We mentor our MSK fellows in research projects when they begin their fellowships; academic time is provided. MSK fellows will complete at least one research project and one outcome project during their fellowship year at BIDMC.

Clinical Volume

Our annual study volume includes over 8000 musculoskeletal MRI and 3000 musculoskeletal CT exams; 2000 MSK ultrasound exams, and 60,000 radiograph studies. We performed over 2000 joint injections annually, of which approximately 1000 of these are arthrogram procedures. Additional procedures include approximately 250 imaging-guided musculoskeletal biopsies performed under CT and US guidance.

Facilities

Beth Israel Deaconess Medical Center is a busy 620 bed teaching hospital and Level I Trauma Center major teaching hospital of Harvard Medical School. The Medical Center includes active Orthopedic, Spine and Rheumatology services, as well as the Joslin Diabetes Clinic and its Podiatry Division. BIDMC is a major New England referral center for orthopedic oncology cases.

Currently our facilities include:

- 8 Multidetector CT; 32-320 slice, including 1 dedicated 64-slice MDCT scanner in the emergency department; four scanners with CT fluoroscopy capability for CT-guided biopsies
- 8 MR systems (Two 3T, Six 1.5T)
- 2 small bore high field MR systems
- 1 PET/CT and 1 SPECT/CT
- 1 dedicated biplane angiography suite for diagnostic and interventional neuroangiography and spinal procedures
- 1 dedicated biplane angiography suite for diagnostic and interventional neuroangiography and spinal procedures
- 1 dedicated Philips iU22 for diagnostic and interventional MSK US examinations
- State-of-the-art 3D laboratory with dedicated workstations: AW and Vitrea
- PACS: GE Centricity. Musculoskeletal studies from five outpatient centers and two community hospitals are also read by the Section at BIDMC, via PACs.



Application Requirements

Applicants must have completed a radiology residency program accredited by the ACGME or Royal College of Physicians and Surgeons of Canada by the time they start their fellowship at BIDMC. Applicants must be certified or qualified for certification by the American Board of Radiology and have obtained a Massachusetts medical license by the beginning of the fellowship.

Your application must include:

1. SSR Fellowship application (see pg. 14)
2. Curriculum vitae
3. Personal statement
4. A letter of recommendation from your program director or current director
5. Two additional letters of recommendation
6. USMLE scores, steps 1-3
7. Medical school transcript and Dean's Letter

If you have any questions, please contact:

Samantha Sarblah

Fellowship Program Coordinator
617-667-3524
ssarblah@bidmc.harvard.edu

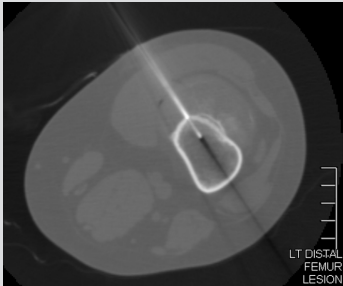
Please email application materials to Samantha Sarblah at:

ssarblah@bidmc.harvard.edu

Musculoskeletal Fellowship Program
Department of Radiology
Beth Israel Deaconess Medical Center
330 Brookline Avenue
Boston, MA 02215



MSK Ultrasound at BIDMC



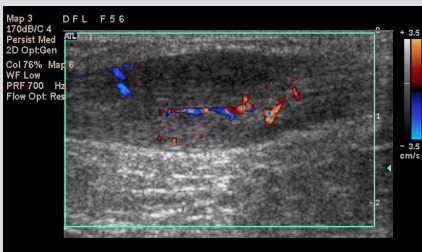
CT-guided biopsy
of a right femoral
lesion



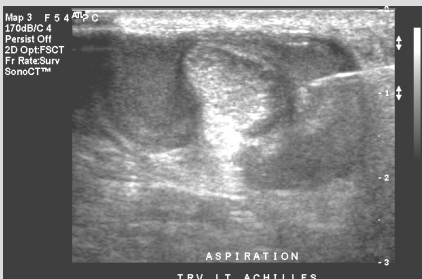
Long axis ultrasound
image of the left shoulder
demonstrating a full
thickness supraspinatus
tendon tear.



Ultrasound
guidance for first
MTP joint steroid
injection



Long axis ultrasound image demonstrating fusiform thickening of the Achilles tendon with increased vascular flow consistent with tendinosis



Ultrasound guidance for aspiration and steroid injection of left Achilles paratenonitis

MSK FACULTY



Jim S. Wu, MD

Chief, Musculoskeletal Imaging & Intervention, BIDMC
Associate Professor of Radiology, Harvard Medical School

Fellowship:

Yale New Haven Hospital in Musculoskeletal Radiology, 2005

Residency:

Yale New Haven Hospital in Diagnostic Radiology, 2004 (Chief Resident, 2003)

Internship:

Internal Medicine, Lahey Clinic Medical Center Burlington, MA, 2000

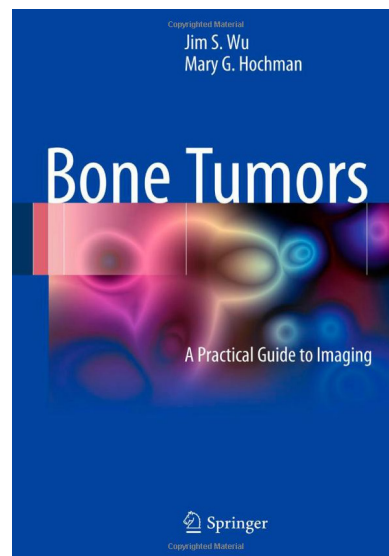
Medical School:

Baylor College of Medicine, Houston, TX, 1999

Link to Harvard Catalyst profile:

<https://connects.catalyst.harvard.edu/Profiles/display/Person/86889>

Contact: jswu@bidmc.harvard.edu



“For residents, fellows, and others needing to cover the essentials of bone lesion imaging, this book is highly recommended.”

– Reviewed by
Chris W. Davison, MBChB
Radiology February 2013

MSK FACULTY



Jennifer Ní Mhuirheartaigh,
MD [MB, BCh, BAO, M Med Sci,
FFR (RSCI), MD]

Director, MSK Imaging & Intervention Fellowship Program
Staff Radiologist, Musculoskeletal Imaging & Intervention /
Community and Interventional Radiology
Instructor in Radiology, Harvard Medical School

Fellowships at BIDMC:

- Abdominal Imaging and Intervention, 2011
- Body Magnetic Resonance Imaging, 2012
- Vascular and Interventional Radiology, 2013
- Musculoskeletal Imaging, 2014

Residency:

- Surgery, Galway University Hospitals, Mayo General Hospital, RCSI, 2004
- Radiology Specialist Registrar, Galway University Hospital, RCSI, 2010

Internship:

- Medicine, Galway Regional Hospital, Galway, IRL, 2001
- Surgery, Mayo General Hospital, Mayo, IRL, 2002

Medical School:

- MB BCh BAO - National University of Ireland, Galway, 2001
- M Med Sci - National University of Ireland, Galway, 2005
- MD - National University of Ireland, Galway, 2012

Link to Harvard Catalyst profile:

<https://connects.catalyst.harvard.edu/Profiles/display/Person/90825>

Contact: jnimhuir@bidmc.harvard.edu



Ronald Eisenberg, MD

Staff Radiologist, Thoracic Imaging
& Musculoskeletal Imaging
Professor of Radiology, Harvard Medical School

Fellowship:

Magnetic Resonance Imaging,
University of California School of Medicine,
San Diego, CA 1987

Residency:

Diagnostic Radiology,
University of California, San Francisco, CA 1975

Diagnostic Radiology, Massachusetts General
Hospital, Boston, MA 1971

Internship:

Mount Zion Medical Center
San Francisco, CA 1970

Medical School:

University of Pennsylvania School of Medicine,
Philadelphia, PA 1969

Accomplishments:

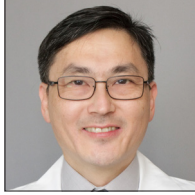
The author of 19 books in radiology, Dr. Eisenberg has specialized in interpreting large volumes of conventional radiographs. As a non-practicing attorney and member of the California Bar, he has authored a book on radiology and the law. He has completed a doctoral degree in Jewish Studies and is the author of 6 published books in that field.

Link to Harvard Catalyst profile:

<https://connects.catalyst.harvard.edu/Profiles/display/Person/75562>

Contact: rleisenb@bidmc.harvard.edu

MSK FACULTY



Wonsuk Kim, MD, MS, MA

Staff Radiologist, MSK Imaging & Intervention / Community Radiology;
Instructor in Radiology, Harvard Medical School

Fellowship:

Musculoskeletal Radiology, Banner University of Arizona Medical Center, Tucson, AZ

Residency:

- Neurosurgery, Penn State Hershey Medical Center, Hershey, PA
- Radiology, UC Davis Medical Center, Sacramento, CA

Internship:

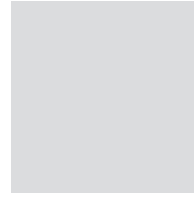
Neurosurgery, Penn State Hershey Medical Center, Hershey, PA

Medical School:

University of Washington School of Medicine, Seattle, WA

Dr. Kung also holds BS and MA degrees in Physics as well as an MS in Electrical Engineering and has had significant experience as a software engineer/designer and research scientist prior to joining BIDMC Radiology.

Contact: wkim6@bidmc.harvard.edu



Aparna Komarraju, MD, MHA

(Coming July 2019)

Staff Radiologist, MSK Imaging & Intervention
Instructor in Radiology, Harvard Medical School

Fellowship:

Musculoskeletal Radiology
University of Texas, Southwestern Medical Center, Dallas, TX

Residency:

Diagnostic Radiology, UAMS, Little Rock, AR

Internships:

Medicine
Mahatma Gandhi Memorial Hospital
Andhra Pradesh, India

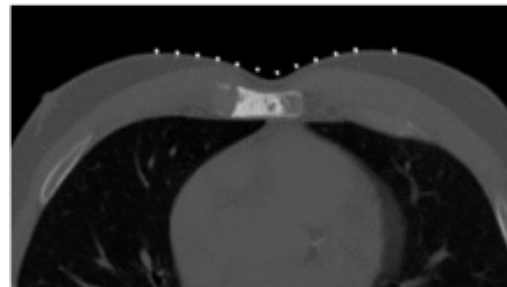
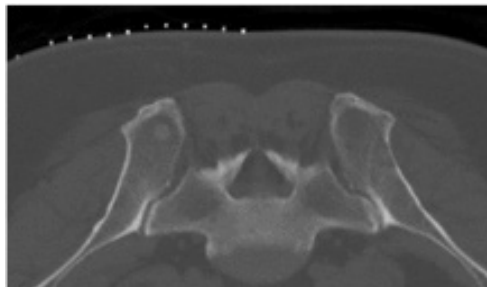
Medicine
University of Arkansas for Medical Sciences (UAMS), Little Rock, AR

Medical Degrees:

MD - Kakatiya Medical College
Andhra Pradesh, India

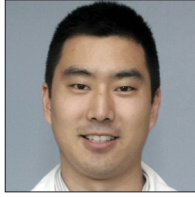
MHA (Health Administration)
Midwestern State University
Wichita Falls, TX

Contact: _____@bidmc.harvard.edu



Ní Mhuircheartaigh J, McMahon C, Lin YC, Wu J. Diagnostic yield of percutaneous biopsy for sclerotic bone lesions: Influence of mean Hounsfield units. Clin Imaging. 2017 Jul 4;46:53-56. PMID: 28728015.

MSK FACULTY



Justin Kung, MD

Staff Radiologist, MSK Imaging & Intervention / Community Radiology; Director of Musculoskeletal Radiology Quality Improvement; Director, Radiology Network Integration & Acute Care Services, BIDMC
Assistant Professor of Radiology, Harvard Medical School

Fellowship:

Musculoskeletal Radiology (Chief Fellow), Beth Israel Deaconess Medical Center, 2010

Residency:

Radiology, Beth Israel Deaconess Medical Center, 2009

Internship:

Transitional Internship, Albert Einstein / Jefferson Medical School, Philadelphia, PA, 2005

Medical School:

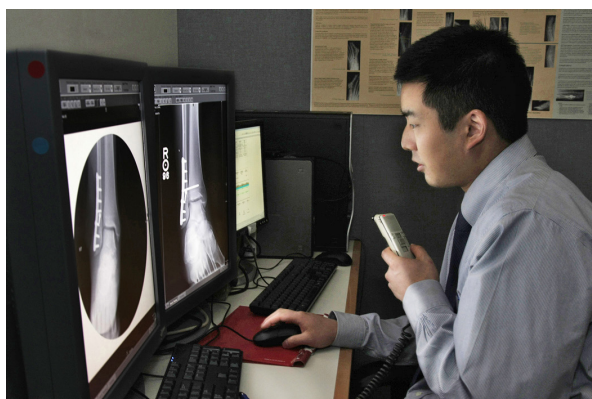
University of Pennsylvania School of Medicine, Philadelphia, PA, 2005

Currently, Dr. Kung divides his time between musculoskeletal radiology at BIDMC in Boston and general radiology at BIDMC affiliated hospitals.

Link to Harvard Catalyst profile:

<https://connects.catalyst.harvard.edu/Profiles/display/Person/34411>

Contact: jkung@bidmc.harvard.edu



Jackie J. Lian, MD

Staff Radiologist, MSK Imaging & Intervention / Community Radiology;
Instructor in Radiology, Harvard Medical School

Fellowship:

Musculoskeletal Imaging, St. Joseph's Healthcare and Juravinski Cancer Center, McMaster University, Hamilton, ON, Canada

Residency:

Diagnostic Radiology, McGill University Health Center (MUHC), McGill University, Montreal, Canada

Medical School:

Medicine (Advanced French Medical Terminology Certificate), University of Ottawa
Ottawa, ON, Canada

Dr. Lian also comes to BIDMC Radiology with a Bachelor of Science Degree in Engineering and Engineering Chemistry from Queen's University, Kingston, ON, Canada

Contact: jljan2@bidmc.harvard.edu

Alumni Fellows 2003-2018

Current positions

Annese, Christian MD
2007 - 2008
Progressive Health, LLC
Englewood Cliffs, NJ

Awan, Omer MD
2013 - 2014
Assistant Professor of Musculoskeletal Radiology,
Temple University Health System

Baldwin, Michael T. MD
2012 - 2013
UConn Health
Assistant Professor of Radiology
University of Connecticut School of Medicine

Buetow, Stephen J. MD
2006 - 2007
Private Practice
Mt. Baker Imaging
Bellingham WA 98225

Cohen, Micah G. MD
2014 - 2015
Assistant Professor
Einstein Medical Center, Philadelphia, PA

Coleman, Stephanie MD, MPH
2015 - 2016
Radiologist, Kaiser Permanente Baldwin Park
Medical Center, Baldwin Park, CA

Evangelista, Peter T. MD
2003 - 2004
Associate Professor of Diagnostic Imaging,
MSK Section Chief
Warren Alpert Medical School
Brown University, RI

Farraher, Steven MD
2005 - 2006
Spectrum Medical Group
98 Campus Avenue
Lewiston, ME

Geary, Michael MD
2008 - 2009
Commonwealth Radiology Associates
(North Shore Medical Center/Salem Hospital)
Salem, MA

Gershater, Elize MD
2011-2012
Radiologist, Toronto General Hospital
Toronto Canada

Glazier, David MD
2014 -2015
Radiologist, Portsmouth Radiological
Associates Derry, New Hampshire

Khatami, David MD, PhD
2017 - 2018
Radiologist, private practice
VIA Radiology
Seattle, Washington

Klein, Devon MD
2004 -2005
Radiology Department, Lenox Hill Hospital
Chief Musculoskeletal Imaging, New York, NY

Kung, Justin MD
2009 - 2010
MSK attending
Vice Chair, Network Integration & Business
Development; Chief, Acute & Ambulatory Care
Services, BIDMC
Assistant Professor of Radiology, HMS

Lee, Brian H. MD
2017 - 2018
Radiologist, private practice
Coastal Imaging
Red Bank, NJ

Long, Suzanne MD
2009 - 2010
Assistant Professor,
Radiology Residency Program Director
Thomas Jefferson University Hospital
Philadelphia, PA

Mangrulkar, Vaibhav MD
2008 - 2009
Radiologist, Private practice:
Department of Radiology
Clara Mass Medical Center
Belleville, NJ

McGuire, Shawn MD
2006 - 2007
Radiologist, Private practice
Madison Radiologists
Madison, WI

Alumni Fellows 2003-2018

Current positions

McMahon, Colm J. MB BAO BCh
2007 – 2008
Commonwealth Radiology Associates
Salem, MA (formerly HMS Assistant Professor,
BIDMC)

Melenevsky, Yulia MD
2010 - 2011
Chief, Musculoskeletal Radiology / Associate
Professor of Radiology, Rheumatology and
Orthopedic Surgery, Augusta University
[formerly Georgia Regents University]

Ní Mhuircheartaigh, Jennifer MD, MMedSci
2013 - 2014
Radiology attending in MSK & intervention/
Community/IR
Co-Director, MSK Imaging & Intervention
Fellowship Program, BIDMC
Instructor in Radiology, HMS

Patel, Jay MD
2011-2012
Quantum Radiology, Marietta, GA

Princewill, Kelechi MD
2012- 2013
Radiologist Private practice,
Quantum Imaging, Lewisberry, PA

Prober, Allen S. MD
2016 - 2017
Radiologist, Private practice:
Clara Mass Medical Center, Belleville, NJ

Redmond, Patrick MD
2015-2016
Radiologist Private practice –
L&M Radiology, Lawrence, MA

Shif, Yuri MD
2016 - 2017
MSK Radiologist,
Saint Luke's Hospital,
Kansas City, MO

Siegel, Daniel MD
2010 - 2011
Clinical Associate Professor,
Program Director, MSK Radiology Fellowship
Program
Henry Ford Hospital, Detroit, MI

Annese, Christian MD
2007 - 2008
Progressive Health,LLC
Englewood Cliffs, NJ

Awan, Omer MD
2013 - 2014
Assistant Professor of Musculoskeletal Radiology,
Temple University Health System

Baldwin, Michael T. MD
2012 - 2013
UConn Health
Assistant Professor of Radiology
University of Connecticut School of Medicine

Buetow, Stephen J. MD
2006 - 2007
Private Practice
Mt. Baker Imaging
Bellingham WA 98225

Cohen, Micah G. MD
2014 - 2015
Assistant Professor
Einstein Medical Center, Philadelphia, PA

Coleman, Stephanie MD, MPH
2015 - 2016
Radiologist, Kaiser Permanente Baldwin Park Medical
Center, Baldwin Park, CA

Evangelista, Peter T. MD
2003 - 2004
Associate Professor of Diagnostic Imaging,
MSK Section Chief
Warren Alpert Medical School
Brown University, RI

Farraher, Steven MD
2005 - 2006
Spectrum Medical Group
98 Campus Avenue
Lewiston, ME

Geary, Michael MD
2008 - 2009
Commonwealth Radiology Associates
(North Shore Medical Center/Salem Hospital)
Salem, MA

MSK Publications

2017-2018

- Agarwal MD, Resnick EL, **Mhuirheartaigh JN**, Morteale KJ. MR Imaging of the Female Perineum: Clitoris, Labia, and Introitus. *Magn Reson Imaging Clin N Am*. 2017 Aug;25(3):435-455. Review. PMID: 28668154.
- Anderson ME, **Wu JS**, Vargas SO. CORR (®) Tumor Board: Is There Benefit to Free Over Pedicled Vascularized Grafts in Augmenting Tibial Intercalary Allograft Constructs? *Clin Orthop Relat Res*. 2017 May;475(5):1319-1321. PMID: 28281138.
- Anderson ME, **Wu JS**, Vargas SO. CORR (®) Tumor Board: Do Orthopaedic Oncologists Agree on the Diagnosis and Treatment of Cartilage Tumors of the Appendicular Skeleton? *Clin Orthop Relat Res*. 2017 Sep;475(9):2172-2175. Review. PMID: 28589333; PMCID: PMC5539037.
- Anderson ME, **Wu JS**, Vargas SO. CORR® Tumor Board: Micrometastatic Drug Screening Platform Shows Heterogeneous Response to MAP Chemotherapy in Osteosarcoma Cell Lines. *Clin Orthop Relat Res*. 2018 May 24. PMID: 29846201.
- Asch E, Shah SH, Berkowitz S, **Mehta S**, **Eisenberg RL**, Jayadevan R, Connolly C, **Slanetz PJ**. Resident Idea System: A Novel Tool to Engage Trainees in Quality Improvement at the Institutional Level. *J Am Coll Radiol*. 2017 Feb;14(2):256-261. PMID: 27815057.
- Austin DC, **Wu JS**, Spentzos D, Goldsmith JD, Anderson ME. A Collision Tumor Involving a Primary Leiomyosarcoma of the Lower Extremity and a Metastatic Medullary Thyroid Carcinoma: A Case Report. *JBJS Case Connect*. 2017 Oct-Dec;7(4):e90. doi: 10.2106/JBJS.CC.17.00041. PMID: 29286973.
- Becker-Weidman D, **Mhuirheartaigh JN**, Morteale KJ. The skinny on skin: MRI features of cutaneous and subcutaneous lesions detected on body MRI studies. *Abdom Radiol (NY)*. 2018 Mar 10. doi: 10.1007/s00261-018-1543-y. Review. PMID: 29525881.
- Boos J, Fang J, **Snell A**, **Hallett D**, Siewert B, **Eisenberg RL**, Brook OR. Electronic Kiosks for Patient Satisfaction Survey in Radiology. *AJR Am J Roentgenol*. 2017 Mar;208(3):577-584. PMID: 28004975.
- Chang CD, Wei J, Goldsmith JD, Gebhardt MC, **Wu JS**. MRI guided needle localization in a patient with recurrence pleomorphic sarcoma and post-operative scarring. *Skeletal Radiol*. 2017 Jul;46(7):975-981. PMID: 28280850.
- Chang CD, **Wu JS**. MR Imaging Findings in Heel Pain. *Magn Reson Imaging Clin N Am*. 2017 Feb;25(1):79-93. Review. PMID: 27888853.
- Chang CD, **Wu JS**. Imaging of Musculoskeletal Soft Tissue Infection. *Semin Roentgenol*. 2017 Jan;52(1):55-62. PMID: 28434505.
- Chang CD, **Wu JS**, **Mhuirheartaigh JN**, **Hochman MG**, Rodriguez EK, Appleton PT, McMahon CJ. Effect of sarcopenia on clinical and surgical outcome in elderly patients with proximal femur fractures. *Skeletal Radiol*. 2018 Jun;47(6):771-777. Epub 2017 Dec 15. PMID: 29247259.
- Deng CY, Lin YC, **Wu JS**, Cheung YC, Fan CW, Yeh KY, **McMahon CJ**. Progressive Sarcopenia in Patients With Colorectal Cancer Predicts Survival. *AJR Am J Roentgenol*. 2018 Jan 24:1-7. PMID: 29364725.
- Eisenberg RL**. Selecting Cases for Resident Interpretation to Enhance the Teaching Experience. *Acad Radiol*. 2018 Mar;25(3):263-264. PMID: 29174206.
- Eisenberg RL**, Heidinger BH. Low Yield of Chest Radiography in General Inpatients and Outpatients with "Positive PPD" Results in a Country with Low Prevalence of TB. *Acad Radiol*. 2017 Jul;24(7):846-850. PMID: 28153574.
- Eisenberg RL**, Ngo LH, Heidinger BH, Bankier AA. Honorary Authorship in Radiologic Research Articles: Assessment of Pattern and Longitudinal Evolution. *Acad Radiol*. 2018 Mar 16. pii: S1076-6332(18)30109-0. PMID: 29555566.
- Expert Panel on Musculoskeletal Imaging; Bencardino JT, Stone TJ, Roberts CC, Appel M, Baccei SJ, Cassidy RC, Chang EY, Fox MG, Greenspan BS, Gyftopoulos S, **Hochman MG**, Jacobson JA, Mintz DN, Mlady GW, Newman JS, Rosenberg ZS, Shah NA, Small KM, Weissman BN. ACR Appropriateness Criteria(®) Stress (Fatigue/ Insufficiency) Fracture, Including Sacrum, Excluding Other Vertebrae. *J Am Coll Radiol*. 2017 May;14(5S):S293-S306. PMID: 28473086.
- Expert Panel on Musculoskeletal Imaging, **Hochman MG**, Melenevsky YV, Metter DF, Roberts CC, Bencardino JT, Cassidy RC, Fox MG, Kransdorf MJ, Mintz DN, Shah NA, Small KM, Smith SE, Tynus KM, Weissman BN. ACR Appropriateness Criteria(®) Imaging After Total Knee Arthroplasty. *J Am Coll Radiol*. 2017 Nov;14(11S):S421-S448. PMID: 29101982.
- Expert Panel on Musculoskeletal Imaging; Jacobson JA, Roberts CC, Bencardino JT, Appel M, Arnold E, Baccei SJ, Cassidy RC, Chang EY, Fox MG, Greenspan BS, Gyftopoulos S, **Hochman MG**, Mintz DN, Newman JS, Rosenberg ZS, Shah NA, Small KM, Weissman BN. ACR Appropriateness Criteria(®) Chronic Extremity Joint Pain-Suspected Inflammatory Arthritis. *J Am Coll Radiol*. 2017 May;14(5S):S81-S89. PMID: 28473097.
- Expert Panel on Musculoskeletal Imaging; Ward RJ, Roberts CC, Bencardino JT, Arnold E, Baccei SJ, Cassidy RC, Chang EY, Fox MG, Greenspan BS, Gyftopoulos S, **Hochman MG**, Mintz DN, Newman JS, Reitman C, Rosenberg ZS, Shah NA, Small KM, Weissman BN. ACR Appropriateness Criteria(®) Osteoporosis and Bone Mineral Density. *J Am Coll Radiol*. 2017 May;14(5S):S189-S202. PMID: 28473075.
- Fang J, Boos J, Cohen MP, Kruskal JB, **Eisenberg R**, Siewert B, Brook OR. Radiologists' Experience With Patient Interactions in the Era of Open Access of Patients to Radiology Reports. *J Am Coll Radiol*. 2018 Jan 2. pii: S1546-1440(17)31354-6. PMID: 29305077.
- Fang J, Franconeri A, Boos J, **Nimhuirheartaigh J**, Zhang Z, Brook A, Brook OR. Opportunistic Bone Density Measurement on Abdomen and Pelvis Computed Tomography to Predict Fracture Risk in Women Aged 50 to 64 Years Without Osteoporosis
- Heffernan EJ, Moran DE, Gerstenmaier JF, McCarthy CJ, Hegarty C, **McMahon CJ**. Accuracy of 64-section MDCT in the diagnosis of cruciate ligament tears. *Clin Radiol*. 2017 Jul;72(7):611.e1-611.e8. PMID: 28214478.
- Hochman MG**. Preface. MR Imaging of the Foot and Ankle [Special Issue] *Magn Reson Imaging Clin N Am*. 2017 Feb;25(1):xvii-xviii. doi: 10.1016/j.mric.2016.09.004. PMID: 27888856. [Editorial]
- Hochman MG**, **Wu JS**. MR Imaging of Common Soft Tissue Masses in the Foot and Ankle. *Magn Reson Imaging Clin N Am*. 2017 Feb;25(1):159-181. Review. PMID: 27888846.
- Hsuan HF, Lin YC, Chiu CH, **Ni Mhuirheartaigh J**, Juan YH, Chan YS, **Wu JS**. Posterior cruciate ligament tears in Taiwan: an analysis of 140 surgically treated cases. *Clin Imaging*. 2016 Sep-Oct;40(5):856-60. PMID: 27179152.

MSK Publications

2017-2018

Hughes AJ, DeBuitelir C, Soden P, O'Donnchadha B, Tansey A, Abdulkarim A, **McMahon C**, Hurson CJ. 3D Printing Aids Acetabular Reconstruction in Complex Revision Hip Arthroplasty. *Adv Orthop*. 2017;2017:8925050.

doi: 10.1155/2017/8925050. PMID: 28168060; PMCID: PMC5259605.

Itri JN, Bakow E, Probyn L, Kadom N, Duong PT, Gettle LM, Mendiratta-Lala M, Scali EP, Winokur RS, Zygmunt ME, **Kung JW**, Rosenkrantz AB. The Science of Quality Improvement. *Acad Radiol*. 2017 Mar;24(3):253-262. Review. PMID: 28193375.

McMahon CJ, Ramappa A, Lee K. The Extensor Mechanism: Imaging and Intervention. *Semin Musculoskelet Radiol*. 2017 Apr;21(2):89-101. PMID: 28355673.

Metitiri O, Ghorbanhoseini M, Zurakowski D, **Hochman MG**, Nazarian A, Kwon JY. Accuracy and Measurement Error of the Medial Clear Space of the Ankle. *Foot Ankle Int*. 2017 Apr;38(4):443-451. Epub 2016 Nov 29. PMID: 27903794.

Murphey MD, Roberts CC, Bencardino JT, Appel M, Arnold E, Chang EY, Dempsey ME, Fox MG, Fries IB, Greenspan BS, **Hochman MG**, Jacobson JA, Mintz DN, Newman JS, Rosenberg ZS, Rubin DA, Small KM, Weissman BN. ACR Appropriateness Criteria Osteonecrosis of the Hip. *J Am Coll Radiol*. 2016 Feb;13(2):147-55. PMID: 26846390.

Murphy IG, NiMhurchu E, Gibney RG, **McMahon CJ**. MRI-directed cognitive fusion-guided biopsy of the anterior prostate tumors. *Diagn Interv Radiol*. 2017 Mar-Apr;23(2):87-93. PMID: 28074780; PMCID: PMC5338586.

Nemec U, Heidinger B, Sokas C, Chu L, **Eisenberg RL**. Diagnosing Sarcopenia on Thoracic Computed Tomography: Quantitative Assessment of Skeletal Muscle Mass in Patients Undergoing Transcatheter Aortic Valve Replacement. *Acad Radiol*. 2017 Sep;24(9):1154-1161. PMID: 28365235.

Ni Mhuircheartaigh JM, Lee KS, Curry MP, Pedrosa I, Mortelet KJ. Early Peribiliary Hyperenhancement on MRI in Patients with Primary Sclerosing Cholangitis: Significance and Association with the Mayo Risk Score. *Abdom Radiol (NY)*. 2017 Jan;42(1):152-158. PMID: 27472938.

Ní Mhuircheartaigh J, McMahon C, Lin YC, **Wu J**. Diagnostic yield of percutaneous biopsy for sclerotic bone lesions: Influence of mean Hounsfield units. *Clin Imaging*. 2017 Jul 4;46:53-56. PMID: 28728015.

Occhipinti M, Heidinger BH, Pfannenberger C, Munden RF, **Eisenberg RL**, Bankier AA. Managing Incidental Lung Nodules in Patients With a History of Oncologic Disease: A Survey of Thoracic Radiologists. *J Thorac Imaging*. 2017 Mar;32(2):115-120. PMID: 27643445.

Perillo M, Becker-Weidman D, Bezuitehout AF, Siewert B, **Eisenberg RL**. Infections of the Gastrointestinal Tract. *Semin Roentgenol*. 2017 Apr;52(2):63-72. PMID: 28606310.

Pigula-Tresansky AJ, **Wu JS**, Kapur K, Darras BT, Rutkove SB, Anthony BW. Muscle compression improves reliability of ultrasound echo intensity. *Muscle Nerve*. 2017 Aug 18. doi: 10.1002/mus.25779. PMID: 28833292.

Rutkove SB, Kapur K, Zaidman C, **Wu JS**, Pasternak A, Madabusi L, Yim S, Pacheck A, Szelag H, Harrington T, Darras BT. Electrical impedance myography for assessment of Duchenne muscular dystrophy. *Ann Neurol*. 2017 May;81(5):622-632. PMID: 28076894; PMCID: PMC5444980.

Rutkove SB, Kwon H, Guasch M, **Wu JS**, Sanchez B. Electrical impedance imaging of human muscle at the microscopic scale using a multielectrode needle device: A simulation study. *Clin Neurophysiol*. 2018 May 15. pii: S1388-2457(18)31058-7. PMID: 29804914.

Shenoy-Bhangle AS, **Eisenberg RL**, Fineberg T, Slanetz PJ. Residency Mini-fellowships in the PGY-5 Year: Is There Added Value? *Acad Radiol*. 2018 Jun;25(6):708-713. PMID: 29751857.

Shif Y, Kung JW, McMahon CJ, Mhuircheartaigh JN, Lin YC, Anderson ME, **Wu JS**. Safety of omitting routine bleeding tests prior to image-guided musculoskeletal core needle biopsy. *Skeletal Radiol*. 2018 Feb;47(2):215-221. Epub 2017 Oct 6. PMID: 28983679.

Siewert B, Swedeen S, Brook OR, **Eisenberg RL, Hochman M**. Barriers to Safety Event Reporting in an Academic Radiology Department: Authority Gradients and Other Human Factors. *Radiology*. 2018 May 15:171625. PMID: 29762092.

van Schaik K, **Eisenberg R**, Bekvalac J, Rühli F. Evaluating the relationship between lesion burden and aging among the skeletons of an 18th-19th century London cemetery using osteological and radiological analysis. *PLoS One*. 2018 Apr 26;13(4):e0196448. PMID: 29698453.

Wieschhoff GG, Mandell JC, Czuczman GJ, Nikac V, Shah N, Smith SE. Acute non-contact anterior cruciate ligament tears are associated with relatively increased vastus medialis to semimembranosus cross-sectional area ratio: a case-control retrospective MR study. *Skeletal Radiol*. 2017 Nov;46(11):1469-1475. PMID: 28710543.

Wu JS, McMahon CJ, Lozano-Calderon S, **Kung JW**. JOURNAL CLUB: Utility of Repeat Core Needle Biopsy of Musculoskeletal Lesions With Initially Nondiagnostic Findings. *AJR Am J Roentgenol*. 2017 Mar;208(3):609-616. PMID: 27959586.

Wu JS. CORR Insights®: Is Core Needle Biopsy Reliable in Differentiating Between Aggressive Benign and Malignant Radiolucent Bone Tumors? *Clin Orthop Relat Res*. 2018 Mar;476(3):578-579. PMID: 29529644.

Yazdi H, Nazarian A, Kwon JY, Hochman MG, Pakdaman R, Hafezi P, Ghahremani M, Joudi S, Ghorbanhoseini M. Anatomical axes of the proximal and distal halves of the femur in a normally aligned healthy population: implications for surgery. *J Orthop Surg Res*. 2018 Jan 31;13(1):21. PMID: 29386019; PMCID: PMC5793359.

Zaidman CM, **Wu JS**, Kapur K, Pasternak A, Madabusi L, Yim S, Pacheck A, Szelag H, Harrington T, Darras BT, Rutkove SB. Quantitative muscle ultrasound detects disease progression in Duchenne muscular dystrophy. *Ann Neurol*. 2017 May;81(5):633-640. PMID: 28241384; PMCID: PMC5444989.

Zhang L, **McMahon CJ**, Shah S, **Wu JS, Eisenberg RL, Kung JW**. Clinical and Radiologic Predictive Factors of Rib Fractures in Outpatients With Chest pain. *Curr Probl Diagn Radiol*. 2018 Mar - Apr;47(2):94-97. Epub 2017 May 30. Review. PMID: 28716296

Zygmunt ME, Itri JN, Rosenkrantz AB, Duong PT, Mankowski Gettle L, Mendiratta-Lala M, Scali EP, Winokur RS, Probyn L, **Kung JW**, Bakow E, Kadom N. Radiology Research in Quality and Safety: Current Trends and Future Needs. *Acad Radiol*. 2017 Mar;24(3):263-272. Review. PMID: 28193376.

SSR Common Application for Musculoskeletal Radiology Fellowship

Subspecialty Program		Fellowship Year:	
Name:	Last:	First:	Middle Initial:
Date of Birth:			
Address:			
City, State & Zip			
Telephone (Personal):	(CELL):	(HOME):	
Telephone (Work):			
Email:			
Pager #:			
Preferred Contact Method	Home <input type="checkbox"/>	Work <input type="checkbox"/>	Cell <input type="checkbox"/> Pager <input type="checkbox"/> Email <input type="checkbox"/>
Social Security Number		NPI #	
Citizenship:			
VISA Type (J1, H1, F1, etc) (proof of visa status must accompany application)	Expiration Date:	Permanent Resident: Yes No	Other:
Education:			
Premedical College:		Degree:	Year Completed:
Medical School:		Degree:	Year Completed:
If foreign trained, do you have an ECFMG Certificate: Yes No	Certificate No:		Date:
AMERICAN BOARD OF RADIOLOGY/AMERICAN OSTEOPATHIC BOARD OF RADIOLOGY EXAM:			
CORE EXAM: Eligible? Y/N Already Taken? Y/N	If NOT taken, Expected exam dates:		If ALREADY taken, Exam dates and result:
STATES IN WHICH YOU ARE LICENSED TO PRACTICE MEDICINE:			
State:	License #	Expiration Date:	
Have you ever been denied or lost a state license? If yes, explain why:			
Training:			
Internship (Post-Graduate Year 1):			
Hospital:	Type of Training:	Dates:	
Other education, training or hospital research: Please list in chronological order, including your present position.			
Name:	Address:	Type of Training:	Dates:
Name:	Address:	Type of Training:	Dates:
Name:	Address:	Type of Training:	Dates:
Name:	Address:	Type of Training:	Dates:
References: Please list the names and institutions of three physicians who will be writing letters for you.			
1 (Current Program Director or Chairperson):			
2 (MSK Radiologist with whom you have worked):			
3 (Letter writer of your choice):			
Date:		Signature:	

The SSR has provided this common application form for MSK fellowship programs that elect to use it. Applicants are responsible for verifying whether program(s) they apply to accept this form, for providing any additional materials to complete their application at a particular program (e.g. CV, personal statement), and for submitting and confirming receipt of their completed application to the intended program(s). Click on each box to enter your information. You can then save and/or print your completed form.