

Division of Urologic Surgery

Fall / Winter 2020

Message from the Chief

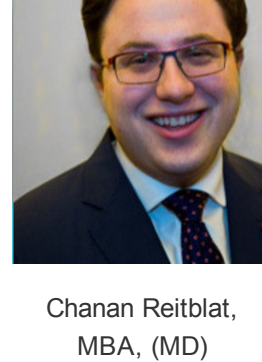


The COVID19 pandemic has brought on unprecedented challenges as we adapt to the new normal in caring for our patients and maintaining our educational duty to our medical students, residents and fellows. We have revamped our clinics and operating rooms to provide safe environments by hybrid utilization of in-person and telehealth visits. While our basic and clinical research activities came to a halt in the first few months of the pandemic, we have since been able to restore our clinical and most of our basic research activities. Our research labs are functioning with social distancing measures in place, and we are able to continue our mission of investigation to advance the care for our patients.

– **Aria F. Olumi, MD**

What's New in Education?

Chanan Reitblat, MBA (MD -2021 – Harvard Medical School) and **Boris Gershman, MD** led a collaboration of the Urology Student Anki Group and BIDMC Urology Faculty during the early months of the pandemic to create a question deck for the popular flashcard app, Anki. The **BIDMC Urology Anki** deck covers core urologic concepts across the spectrum of urologic conditions including urologic emergencies, benign prostatic hyperplasia, erectile dysfunction, voiding dysfunction, urinary tract infection, prostate cancer, and nephrolithiasis. Urology Anki was designed to help prepare medical students for sub-internships as well as intern year of residency, particularly at a time where clinical rotations were abbreviated and away rotations were eliminated. The BIDMC Urology Anki deck, which was developed and peer-reviewed by members of the BIDMC Urologic Surgery faculty, was very well received, with over 730 downloads at the time of this writing and positive feedback from students and educators across the country. Visit **BIDMC Urology Anki** for more information.



Chanan Reitblat,
MBA, (MD)



Boris Gershman, MD

BIDMC Urology Anki

Decks Add Browse Stats Sync

Deck	Due	New
- BIDMC Urology Anki	4	46
Urologic Emergencies	4	46
Acute Scrotum	0	34
Adult UTI	0	46
Benign Prostatic Hyperplasia	0	46
Bladder Drainage	0	46
Erectile Dysfunction	0	46
Hematuria	0	31
Incontinence	0	46
Pediatric UTI	0	46
Prostate Cancer	0	46
Stones	0	46

Identify these anatomic structures of the penis (transverse cross section)

Sources
Image by Dr. Robert Carrasquillo, used with permission.

A 25-year-old female presents with gross hematuria to her PCP. Her urinalysis demonstrates 50-100 RBC/hpf, 50-100 WBC/hpf, and positive nitrites. The next step is to [...].

Question deck for the popular flashcard app, Anki.



Dr. Marc Garnick

Dr. Marc Garnick, Gorman Brothers Clinical Professor of Medicine at Harvard Medical School and editor of the **HMS Annual Report on Prostate Diseases** from Harvard Health Publishing, shares his experience on “Changing Landscape of Prostate Cancer Therapy –Observations over 40 years”. Listen and learn from his pearls of wisdom.



Video Presentation



The minimally invasive fellowship at BIDMC is proud to announce that we matched **Dr. MJ Councilman** from Thomas Jefferson Medical Center Department of Urology. We look forward to working with her for the 2021-22 academic year. Dr. Councilman is slated to complete the **Clinical Effectiveness** course at Harvard School of Public Health as part of her fellowship program.

Residents and faculty from the Longwood area urology programs come together for several surgical bootcamps during the year. Most recently, **Drs. Rus Korets** (BIDMC), along with **Dan Wolin** (BWH), held a PCNL bootcamp geared towards teaching residents percutaneous renal access using fluoroscopic and ultrasound-guided techniques. We look forward to continued collaboration in clinical teaching endeavors to aid in our residents' professional development across all Boston programs.



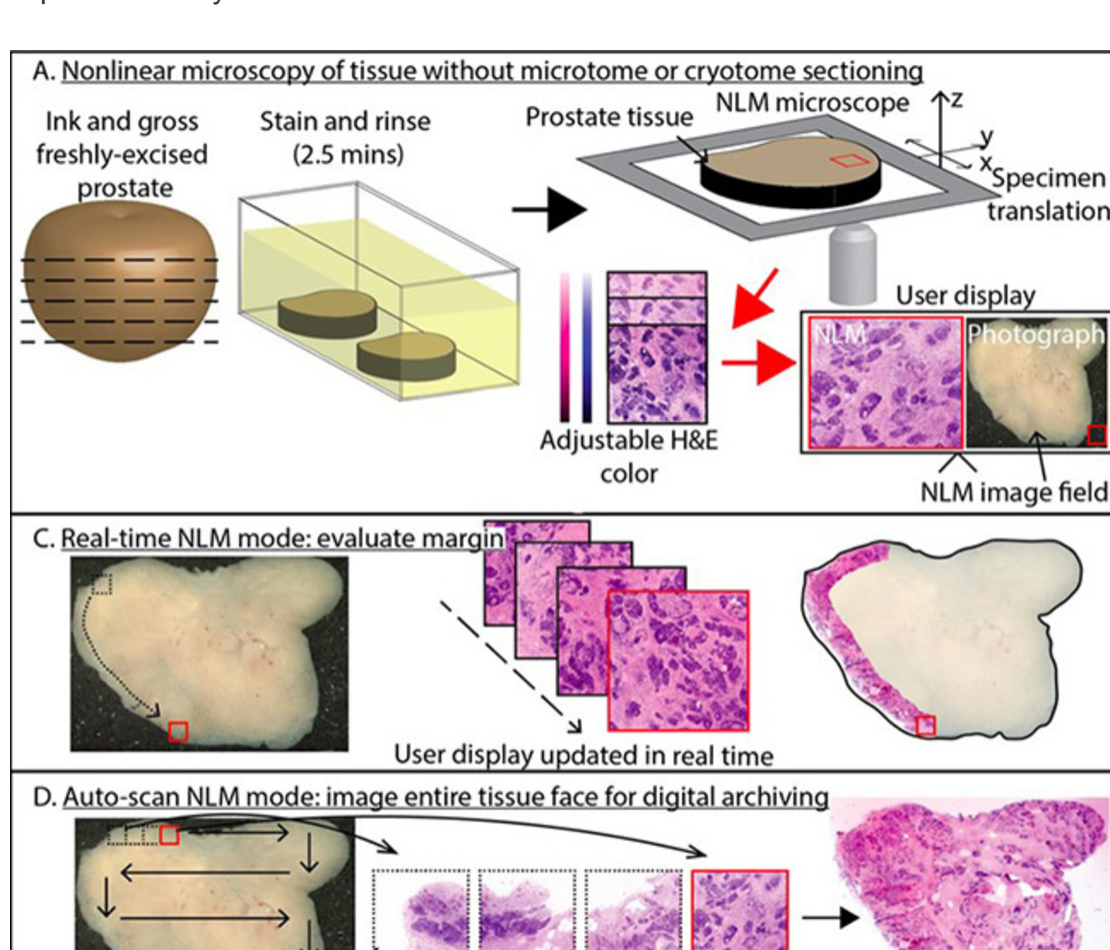
What's New in Practice?

Our group continues to be a leader in New England for providing innovative surgical expertise for advanced bladder cancer. The team of **Andrew Wagner, MD** and **Peter Chang, MD, MPH** have mastered robotic radical cystectomy with total robotic urinary diversion with outstanding results.

Robotic Radical Cystectomy with Totally Robotic Urinary Diversion 2012-2020	
Total patients	110
Average Hospital Stay	7.9 days
Average Duration of Surgery	523.22 minutes
Neoadjuvant chemotherapy	27.27% (30 total)
Preoperative radiation (for any cancer)	11.82% (13 total)
Ave blood loss	380.41 mL
Ileal conduits	93.64% (103 total)
Positive margin status	10.00% (11 total)
Intraoperative death rate	0%
Intraoperative blood transfusions	7.27% (8 total)

What's New in Research?

An NIH/R01 grant has been awarded to a collaborative team of investigators from BIDMC (**Andrew Wagner, MD** (Urology) and **Seymour Rosen, MD** (Pathology)) and MIT to explore a new microscope technology to assess radical prostatectomy specimen margins during surgery. A randomized trial is designed to assess efficacy in improving the rate of nerve sparing surgery, while optimizing oncologic principles by assessing the surgical margins during radical prostatectomy.

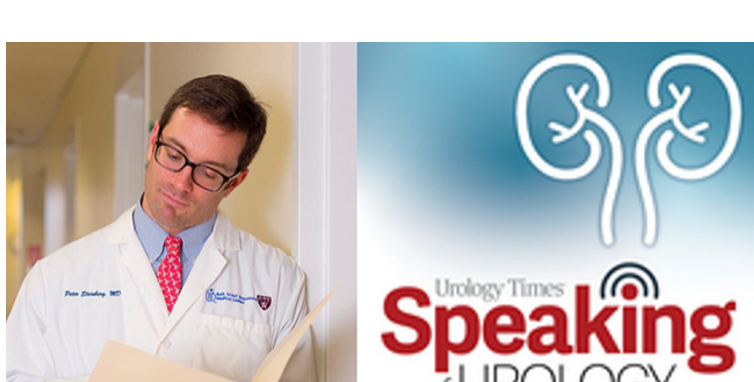


Honors and Awards

Boris Gershman, MD was selected to the steering committee of Society of Urologic Oncology – Young Urologic Oncologists section.

Aria Olumi, MD was recognized as the Distinguished Service Award Recipient from the Society of Basic Urologic Research during the November 2020 annual meeting.

Peter Steinberg, MD was featured in a **podcast** “Speaking of Urology” on medical malpractice and kidney stones



View Our Prior Newsletters

The Division of Urologic Surgery is at the forefront of urologic care, research and education. Learn more about our initiatives and accomplishments in our prior **newsletters**.

Division of Urologic Surgery at Beth Israel Deaconess Medical Center

330 Brookline Avenue, Boston, MA 02215
617-667-3739 • bidmc.org/urology • bidmcurology@bidmc.harvard.edu

Share this email:



Manage your preferences | [Opt out](#) using TrueRemove®
Got this as a forward? [Sign up](#) to receive our future emails.

View this email [online](#).

330 Brookline Ave.
Boston, MA | 02215 US

This email was sent to .
To continue receiving our emails, add us to your address book.

emma

[Subscribe](#) to our email list.