

**One Call or Email:** 617-754-9000 or [spinecenter@bidmc.harvard.edu](mailto:spinecenter@bidmc.harvard.edu)

- Delivers streamlined management of complex spine conditions
- In person and Telehealth visits available at all locations

Contact the Spine Center to connect with specialists that provide comprehensive evaluations and treatments for back and neck issues in these convenient locations:

BOSTON | CHELSEA | CHESTNUT HILL | DEDHAM | LEXINGTON | MILTON | NEEDHAM | NEWBURYPORT

## Non-surgical Spine Specialists

### Pain Medicine and Physiatry



Thomas T.  
Simopoulos, MD



Viet Lukasz Cai, MD



Jatinder S. Gill, MD



Anthony Lee, MD  
*Physiatry*



Syed Mahmood, MD  
*Physiatry*



Jyotsna V. Nagda, MD



Emily Wang, MD  
*Physiatry*



Christopher C.  
Wenger, MD



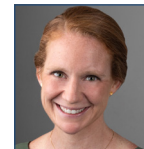
Cyrus Yazdi, MD



Katrina Robertson,  
MSN, AGNP-C



Amanda Iwunze, NP



Caitlin Hussey, NP

## Surgical Spine Specialists

### Neurosurgery



Efstathios (Steve)  
Papavassiliou,  
MD, FAANS  
Co-Director



Ziev Moses, MD



Martina Stippler, MD,  
FAANS

### Orthopedic Surgery and Physiatry



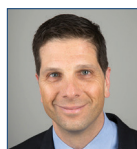
Jason Pittman, MD,  
PhD, FAAOS  
Co-Director



Sapan  
Gandhi, MD



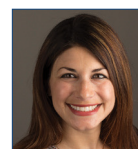
James  
Sarni, MD  
*Physiatry*



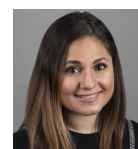
Andrew P.  
White, MD  
FAAOS



Barbara  
Drotter, NP



Julia Kurker, NP



Tereza  
Pinkhasova, NP



Wen Yue, NP

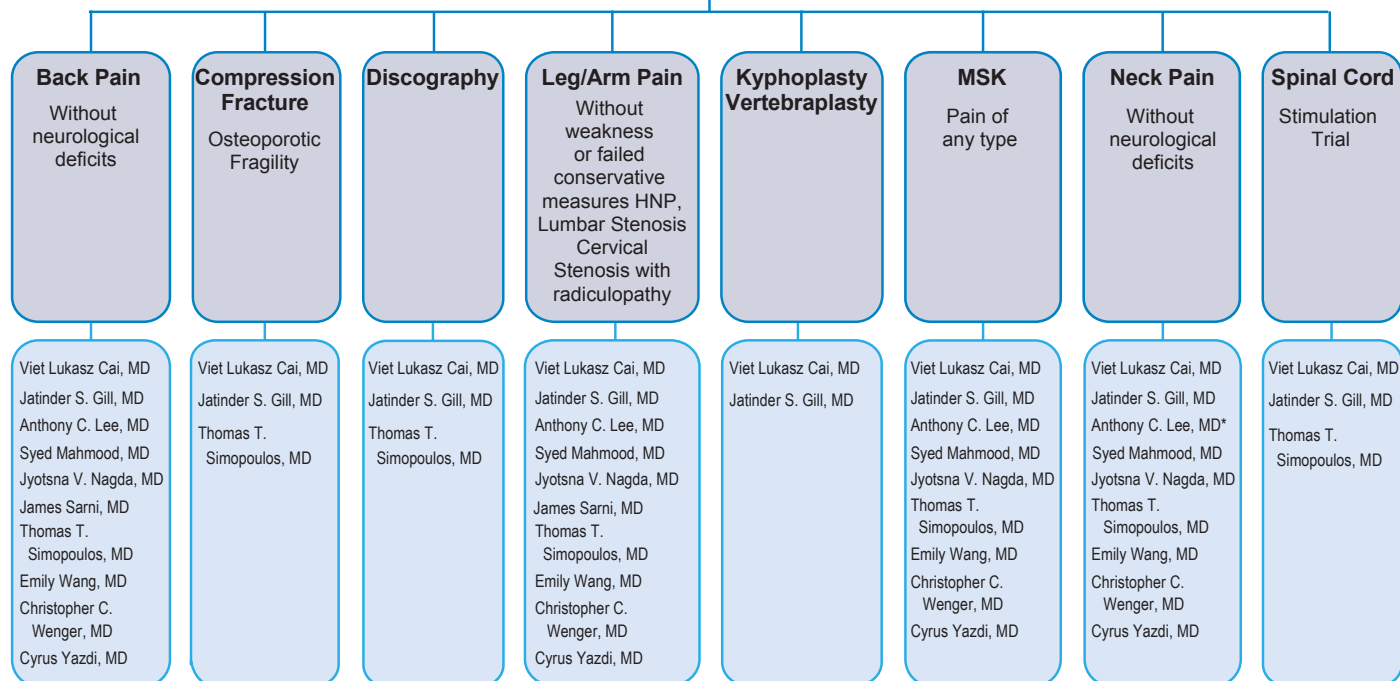
✓ For more information about our care pathways go to:  
[bidmc.org/centers-and-departments/spine-center/for-referring-physicians](http://bidmc.org/centers-and-departments/spine-center/for-referring-physicians)

## Our Triage Process

✓ **Procedure locations:**  
 1 Brookline Place, Boston • Milton • Needham

### Non-Surgical Treatment

✓ **Locations:**  
 Boston • Chelsea • Chestnut Hill • Dedham  
 Lexington • Milton • Needham • Newburyport



Please note: Diagnostic procedures and interventional treatments are scheduled after the initial evaluation is completed due to managed care/insurer requirements.

### Surgical Treatment

*Triage requirements:* Conservative treatment tried (medication for pain relief, physical therapy and procedural injection); patient willing to consider surgery; symptom review; and MRI within 6 months

✓ **Surgery locations:**  
 Beth Israel Deaconess Medical Center, Boston, Beth Israel Deaconess Hospital-Milton, and New England Baptist Hospital

