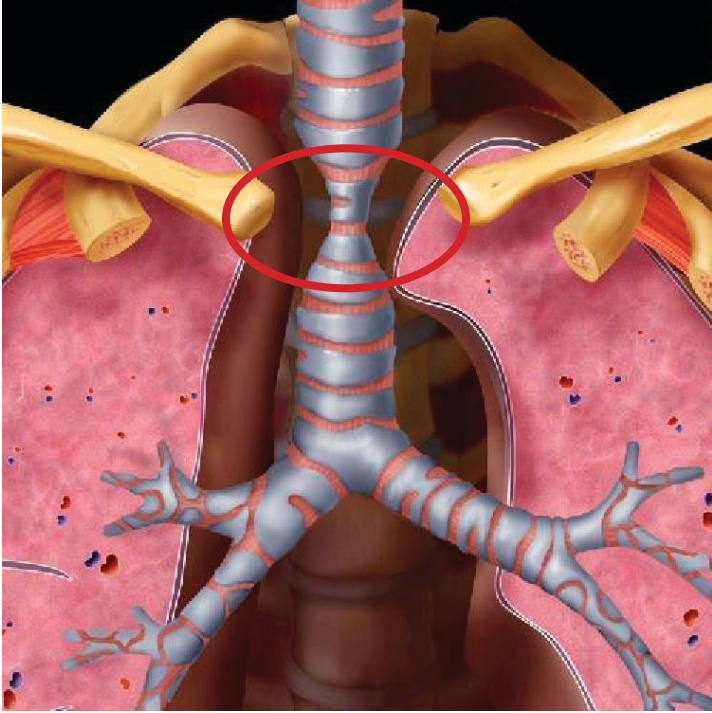


If you have COPD, *you may be at risk for*



Tracheomalacia

Tracheomalacia is a potentially treatable disease characterized by collapse of the trachea (windpipe) that may result in symptoms of coughing, shortness of breath and recurrent infections.

How can you find out if you have tracheomalacia?

We are looking for volunteers with COPD to participate in a research study that is designed to improve the diagnosis and treatment of tracheomalacia. By participating in the study, you will undergo a test to look for tracheomalacia.

You may be eligible to join the study if:

- You are a man or woman aged 35 to 75, and
- You have a history of COPD, and
- You have not had prior tracheal (windpipe) surgery, tracheal stent placement, or prior radiation therapy, and
- You have not had a heart attack within the past 6 months, and
- (for women), you are not currently pregnant

What will happen if you join the study?

- Undergo spirometry (a test of your breathing), a low-dose chest CAT scan to look at your trachea (windpipe) during breathing, and a test to see how far you can walk in 6 minutes
- Answer questionnaires about your health
- Your CAT scan will be interpreted by an expert radiologist, and results will be mailed to you and your doctor
- Receive free parking for study visits
- Receive monetary compensation of \$50 for each 3 hour visit

To learn more:

- Call the Tracheomalacia Study office
at Beth Israel Deaconess Medical Center, Boston:
617-975-6578
Toll Free: 866-812-9456

