

Management of ICU Patients In Interventional Procedural Areas

The Problem

By definition, patients who are in the ICU (East or West) are critically ill. These patients may require an urgent interventional procedure. The management of these patients requires assessment of patient safety, availability of appropriate equipment, the timing of the procedure and anesthesia clearance. Due to a lack a lack of standardization, variations in practice existed. As a result, patients were unnecessarily transferred and treated in procedural areas when acuity required a different level of care.

Aim/Goal

The purpose of this policy is to define the specific needed guidelines for managing Intensive Care Unit patients who require an Interventional Procedure. The goal of this process is to reduce the number of unnecessary and unsafe transports of these critically ill patients.

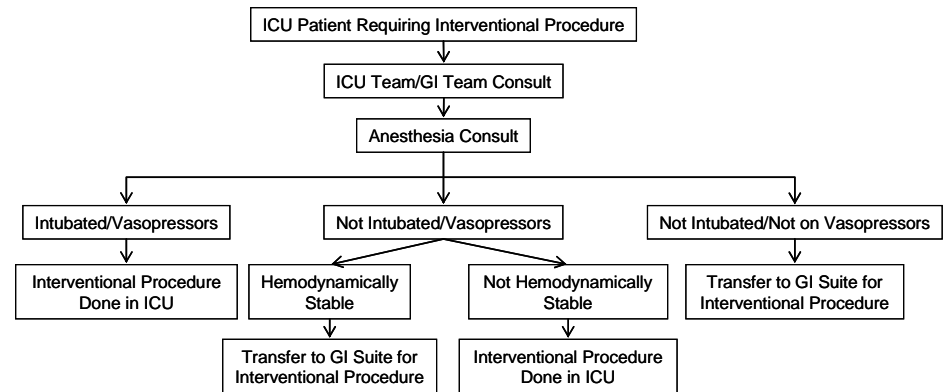
The Team

- Janet Lewis, RN – NM Digestive Disease Center
- Jane Foley, RN - Patient Care Services
- Sharon O'Donoghue, RN - MICU
- Davin Janicki, MPH_(c)- Healthcare Quality
- Phil Hess, MD - Anesthesia
- Interventional Procedures Committee

The Interventions

- Review of anesthesia guidelines and literature to determine a model for best practice.
- Developed screening guidelines for determining patient appropriateness for transport
- Developed a policy to ensure adherence to new standards for transport of ICU patient
- Creation and implementation of Policy # CP-38 - **Management of Intensive Care Patients in Interventional Procedural Area**
- Implemented a practice change in collaboration with Anesthesia, ICU and Interventional Procedure Departments.

The Results/Progress to Date



- Reduction in the amount of patients unnecessarily transferred to interventional procedural areas for treatment
- Documented instances of use of policy to prevent unnecessary transport of unstable patients to Procedural areas

Next Steps/What Should Happen Next

- Define process/outcome measures to be evaluated for Quality Improvement.
- Collect data and conduct continuous process evaluation to ensure continued improvement.

